

# FlashAir™ drive (WebDAV)

FlashAir drive (WebDAV) allows you to view and copy files on the FlashAir card to your PC using Windows® Explorer/Finder via wireless LAN. In other words, just like a network drive, you can see files on the FlashAir card on your PC when the FlashAir card is still inserted into the digital camera or other device that it is normally used in. You can select and save some of or all of your photos or files at a time into your PC as you want.

- This function is available on the FlashAir W-03 and FlashAir W-04 only.
- You cannot save or delete the files on the FlashAir using FlashAir drive function from your PC.
- You cannot use FlashAir drive function with the PC which does not have wireless LAN function. The FlashAir configuration software does not display the setting menu of the function when it is opened on the PC which does not have wireless LAN function.
- Set the wireless LAN startup mode of the FlashAir to Automatic startup mode when you set up the function.

## For Windows®

### How to set up on Windows® PC

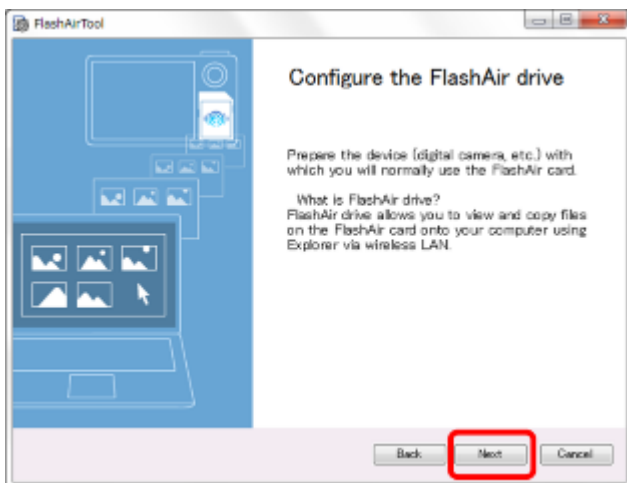
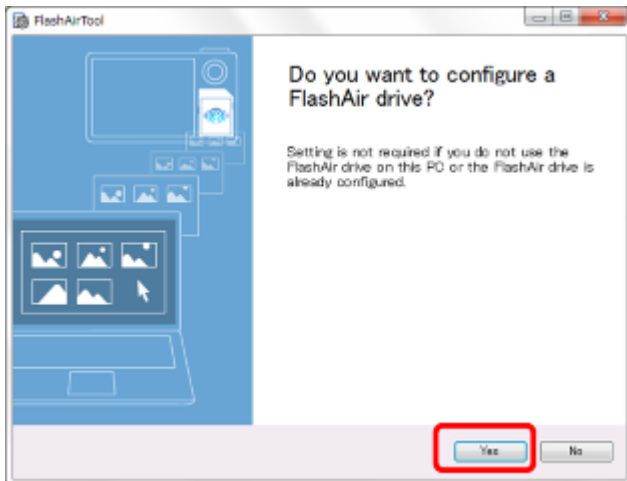
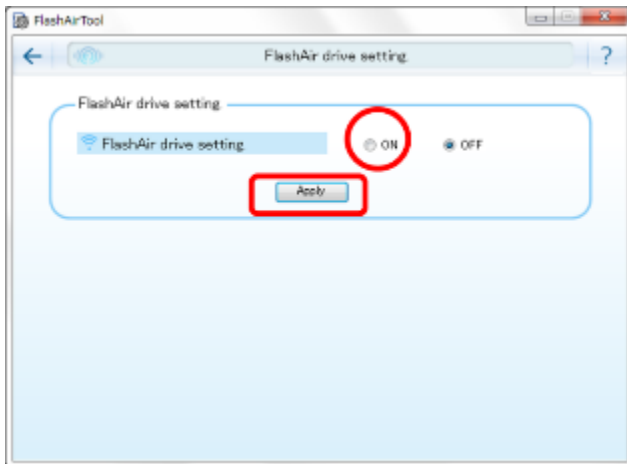
#### Step 1

Insert the FlashAir into a SD memory card slot of your PC and open the FlashAir configuration software (Ver.3.00 or later). Then, click “FlashAir drive setting”.



## Step 2

Check "ON" of "FlashAir drive setting", and click "Apply". Follow the on-screen instructions.

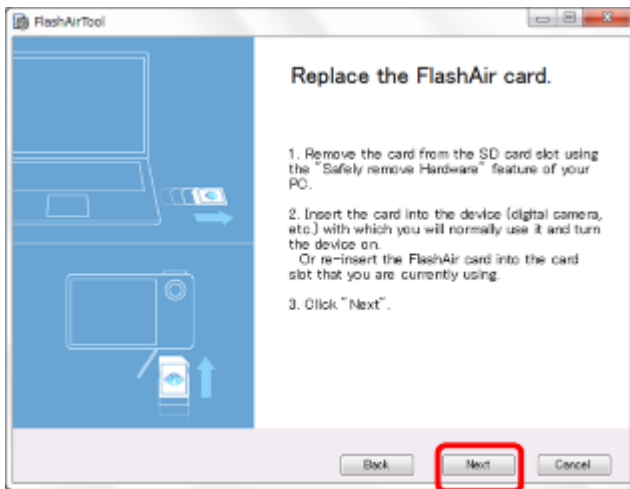


### Step 3

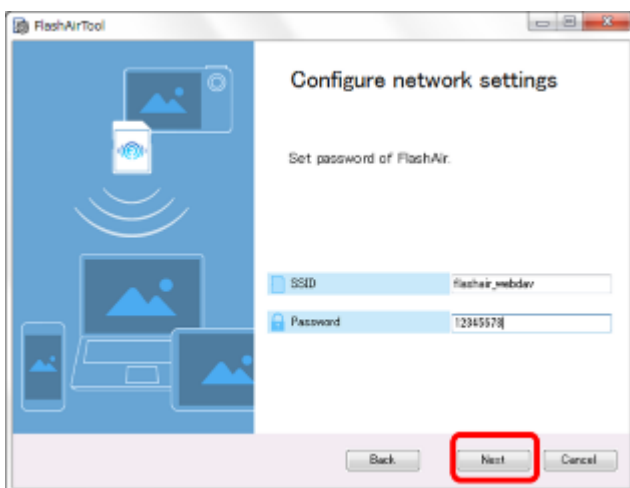
When the following window appears, click “Safely Remove Hardware” of your PC and remove the FlashAir. Then insert the FlashAir into your device (digital camera, etc.) in which you normally use the FlashAir. Then, power on the device.

After turning on the device, click “Next”.

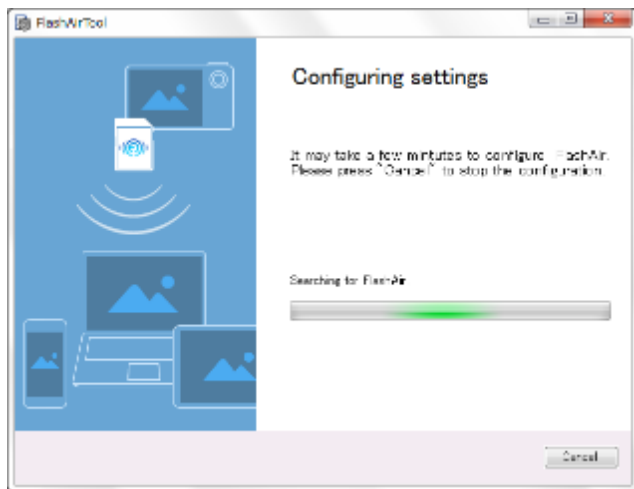
- Setting FlashAir drive may take a few minutes. If you set the automatic power off function of your device to ON, turn off the function or extend the automatic power off time to the longest period possible in case the device is turned off during the setting of FlashAir drive.



Depending on your network environment, the following window may appear. If the following window appears, type in the SSID and password for the FlashAir.

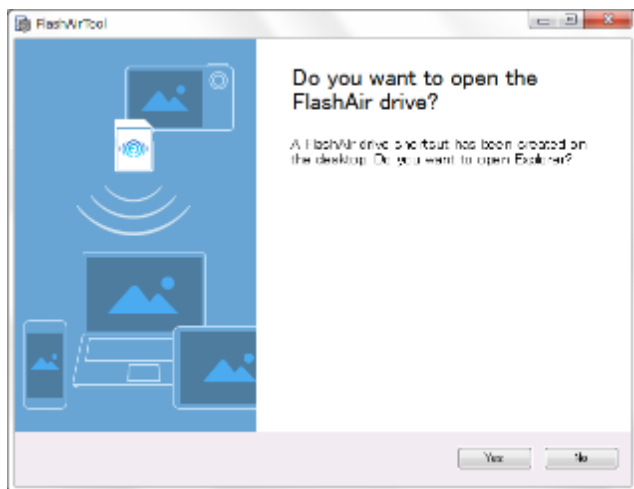


The following window appears.

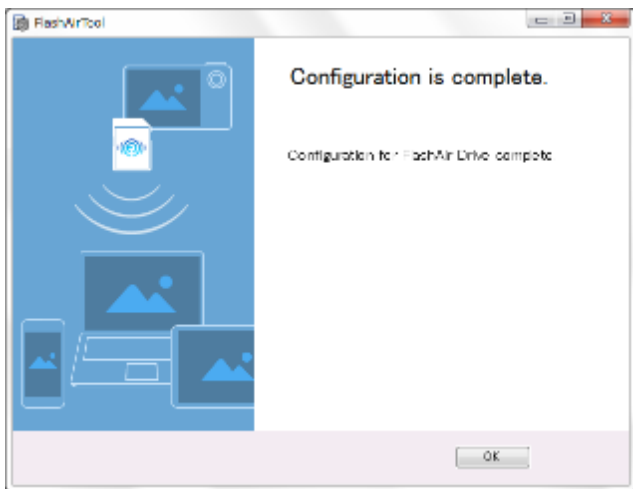


#### Step 4


After the setting is completed, the following window appears. If you want to open Windows® Explorer to view and copy files on the FlashAir card to your PC click "Yes".

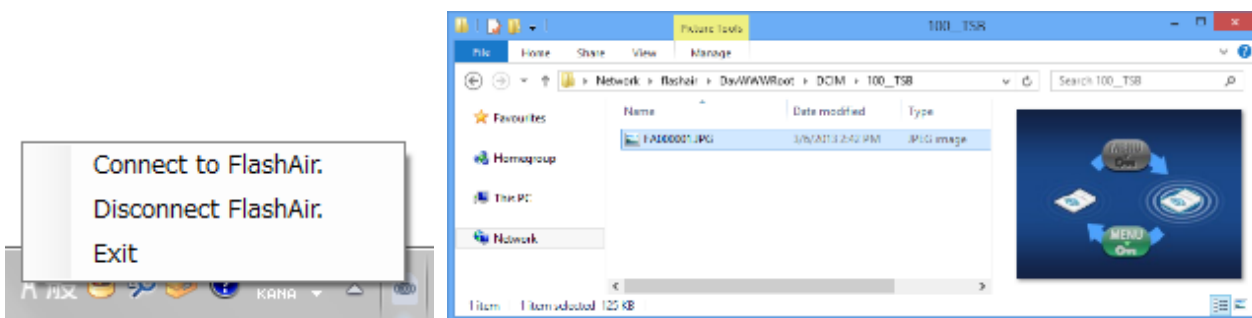


This completes the setting of FlashAir drive.

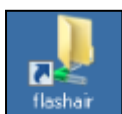


## How to use on Windows® PC

After setting of FlashAir drive is completed, the background application of FlashAir drive starts. Right click  icon in the system tray to display a menu with the following options: "Connect to FlashAir", "Disconnect FlashAir" and "Exit". Click "Connect to FlashAir" to connect to the FlashAir card via wireless LAN and open Windows® Explorer to display photos or files on the FlashAir card. To save photos or files into your PC, select the files you want, then drag and drop them into your PC.



You can also open the Windows® Explorer to display photos or files on the FlashAir card just by double-clicking on the shortcut icon on the desktop while your PC is connected to FlashAir via wireless LAN.



# For Mac

## How to set up on Mac

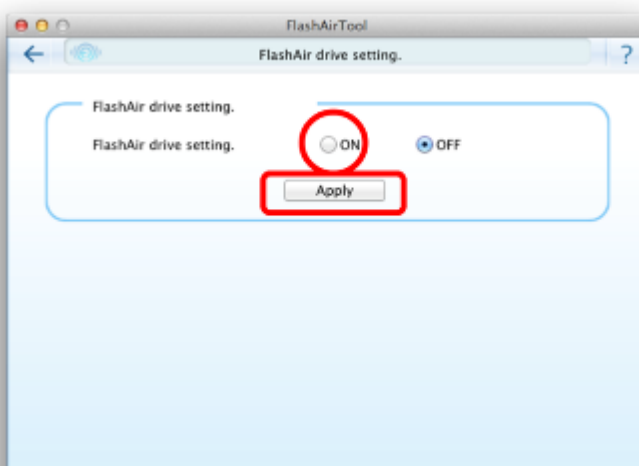
### Step 1

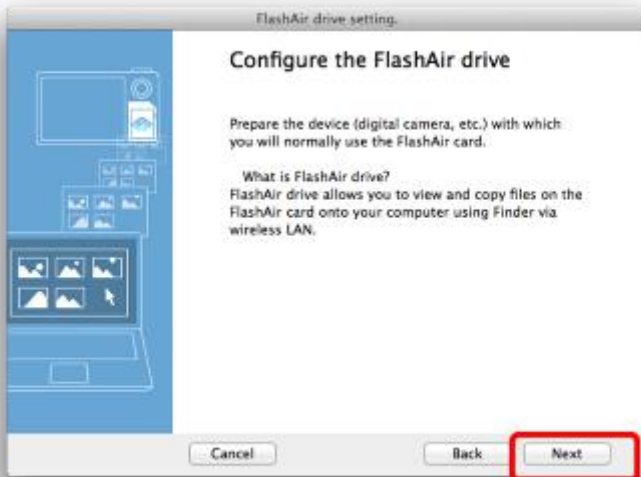
Insert the FlashAir into a SD memory card slot of your PC and open the FlashAir configuration software (Ver.3.00 or later). Then, click "FlashAir drive setting".



### Step 2

Check "ON" of "FlashAir drive setting", and click "Apply". Follow the on-screen instructions.



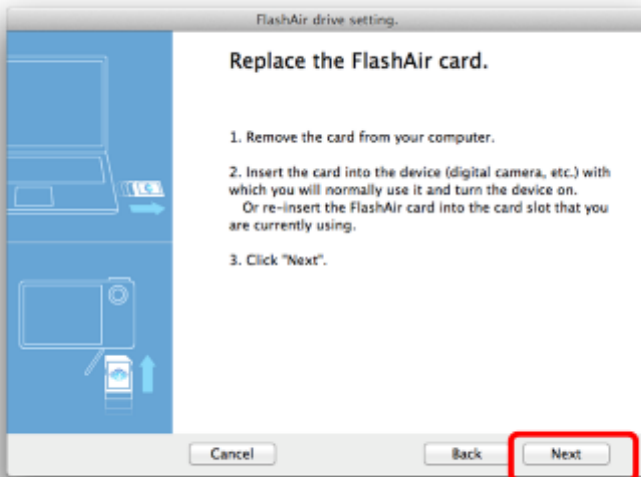


### Step 3

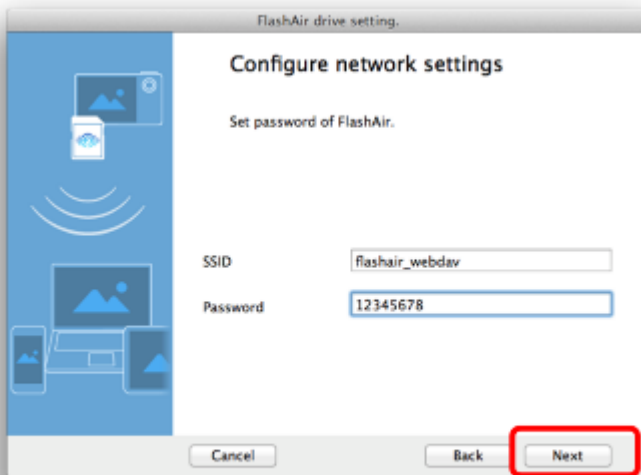
When the following window appears, remove the FlashAir from your PC. Then insert the FlashAir into your device (digital camera, etc.) in which you normally use the FlashAir. Then, power on the device.

After turning on the device, click "Next".

- Setting FlashAir drive may take a few minutes. If you set the automatic power off function of your device to ON, turn off the function or extend the automatic power off time to the longest period possible in case the device is turned off during the setting of FlashAir drive.

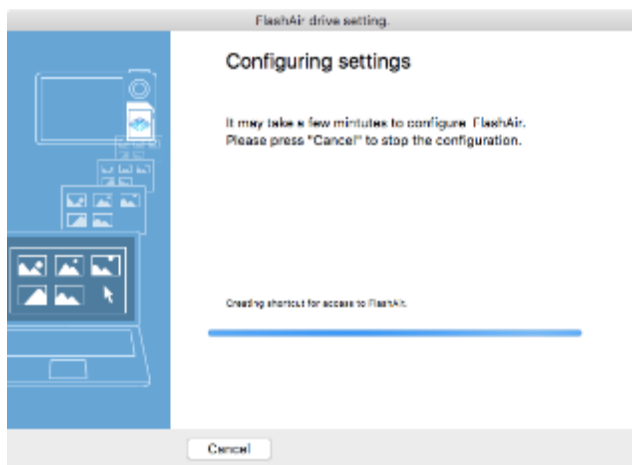


Depending on your network environment, the following window may appear. If the following window appears, type in the SSID and password for the FlashAir.



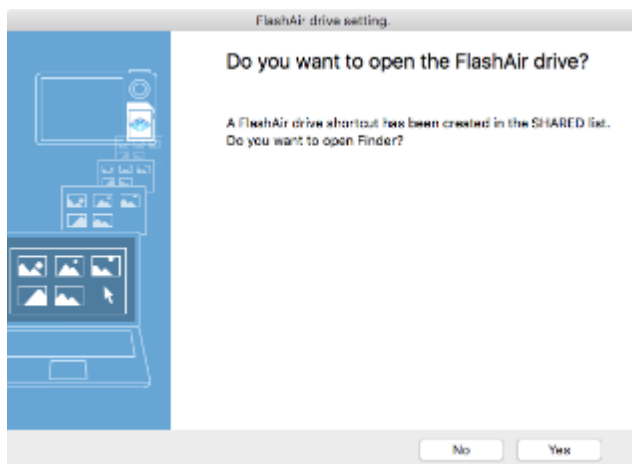


The following window appears.

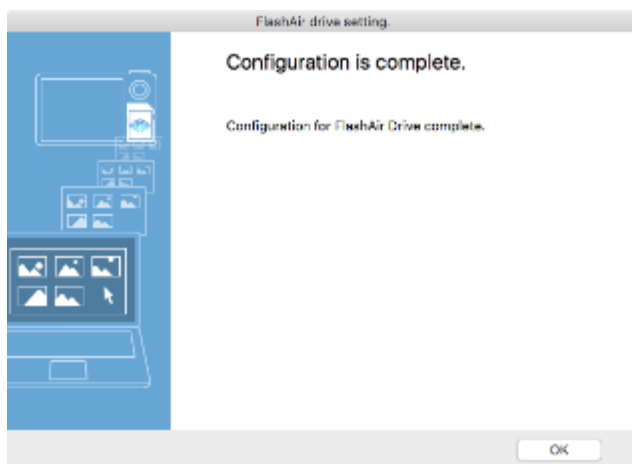


#### Step 4

After the setting is completed, the following window appears. If you want to open Finder to view and copy files on the FlashAir card to your PC click "Yes".



This completes the setting of FlashAir drive.



## How to use on Mac

Connect to FlashAir via Wi-Fi®. And after the connection is established start "FlashAirDrive.app" and click "Connect to FlashAir". Finder opens and FlashAir is bring up on the SHARED folder. To save photos or files into your PC, select the files you want, then drag and drop them into your PC.

- "FlashAirDrive.app" is contained in FlashAir Configuration Software (for Mac OS) "FlashAir\_tool\_vXXX.dmg" ("XXX" represents the version of the software).

